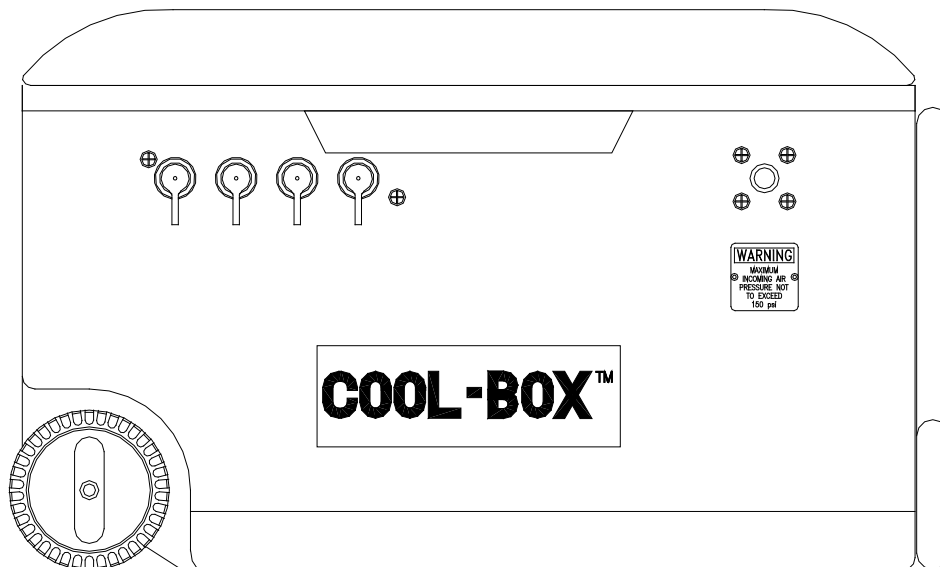




OPERATING INSTRUCTIONS AND REPLACEMENT PARTS

Models: BACB-196 AND BACB-196LP COOL BOX™



WARNING

This manual must be read carefully and followed by all persons who have or will have the responsibility for using or servicing this equipment. This equipment will perform as designed only if used according to the instructions. Otherwise it could fail to perform as designed, causing personal injury or death.

AIR SYSTEMS INTERNATIONAL, INC.

829 Juniper Crescent, Chesapeake, Va, 23320

Telephone (757) 424-3967

Toll Free 1-800-866-8100

Fax No. (757) 424-5348

www.airsystems.com.

e-mail: sales@airsystems.com

Specifications

	BACB-196	BACB-196LP
Weight	36 lbs. (without ice)	36 lbs. (without ice)
Pressure Regulator	0-125 PSI	N/A
Relief Valve	125 PSI, ASME Preset	20 PSI
Flow Capacity	75 CFM	75 CFM
Inlet Fitting	1/2" Nominal Industrial Interchange	1/2" Chicago Coupling
Outlet Fittings	4 Standard, Options Available	4 Standard, Options Available

Set-up/Operation Model: BACB-196

NOTE: Discharge air temperature at the outlet(s) will be approximately 50° - 55° F. With 50 ft. of 3/8" I.D. breathing air hose attached to the respirator, the cool air will warm to approximately 70° - 75° F. If a warmer output temperature is desired, reduce the amount of ice in the cooler. Longer lengths of air hose and ambient air conditions will affect the delivered temperature of the air.

STEP 1)

Secure a Grade D compressed air source up to 150 PSI and connect a minimum 1/2" I.D. air hose from the Grade D air source to the inlet connection on the Cool Box™.

STEP 2)

Make sure the drain cock on the cooling coil is closed. Turn clockwise to close.

STEP 3)

Place a minimum of 20 lbs. of ice in the Cool Box™. This will provide approximately 4-8 hours of operation.

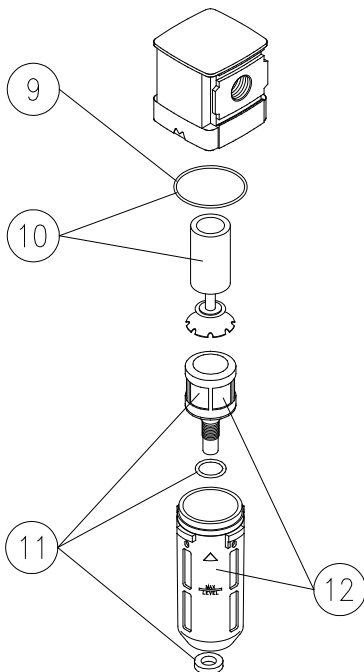
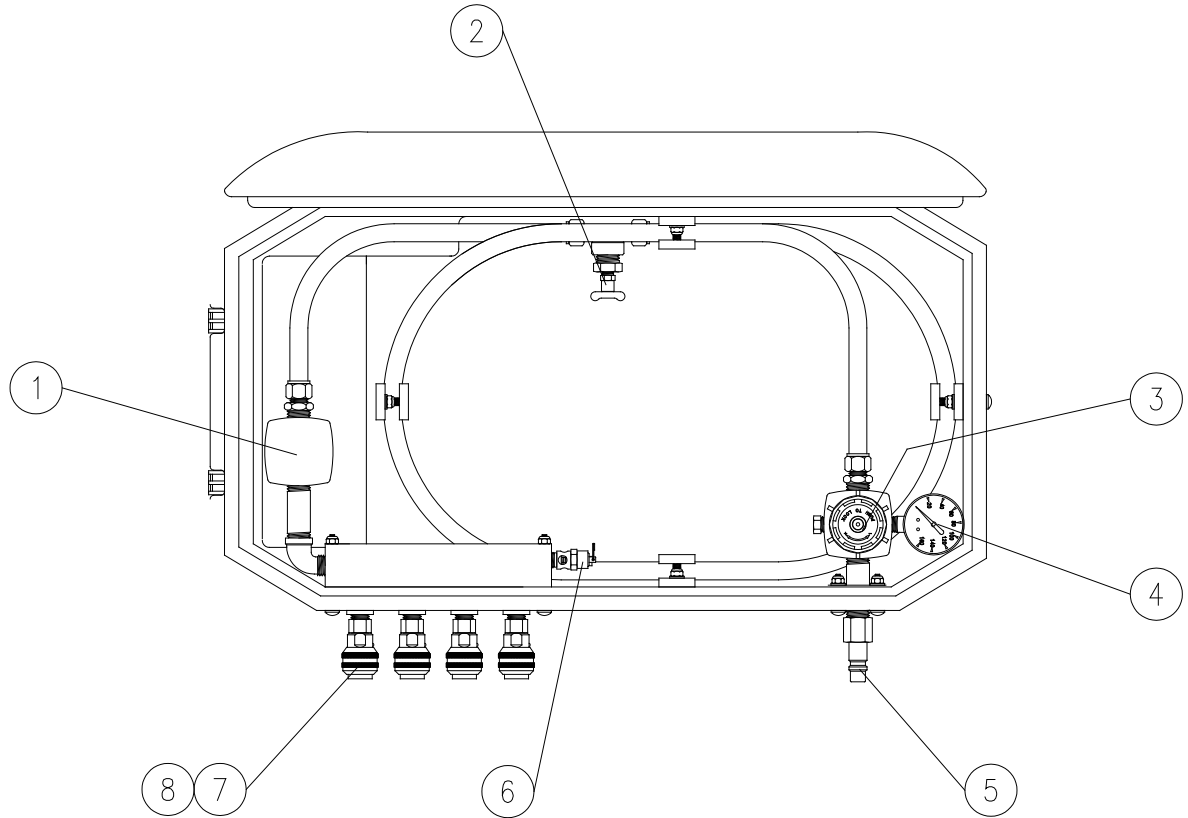
STEP 4)

Attach respirator(s) and hose(s) to the respirator connections.

STEP 5)

Adjust regulator knob to the required pressure specified by the respirator manufacturer.

Replacement Parts Model: BACB-196



ITEM #	DESCRIPTION	PART #
1	FILTER ASSEMBLY	WL086
2	DRAIN COCK	BR2DCMNS
3	PRESSURE REGULATOR	WL257
4	PRESSURE GAUGE	GA20160SSS
5	INLET FITTING	QDH5PL8F
6	125 PSI RELIEF VALVE	VR4125BR
7	HANSEN COUPLING	QDH3SL6F
7A	SCHRADER COUPLING	QDSSL6F
8	HANSEN DUST CAP	QDH3DCAP
8A	SCHRADER DUST CAP	QDSDCAP
9	FILTER BOWL O-RING	WL266
10	REPLACEMENT ELEMENT	BB30-A
11	AUTO DRAIN ASSEMBLY	WL024
12	FILTER BOWL WITH GUARD AND AUTO DRAIN	WL264

Set-up/Operation

Model: BACB-196LP

STEP 1)

Remove 1 outlet fitting from the ambient air pump and install the supplied Chicago fitting in it's place. (Use supplied adapter(s) if necessary)

STEP 2)

Connect the supplied hose to the ambient air pump and the Cool Box™ inlet fitting.

STEP 3)

Make sure the drain cock on the cooling coil is closed. Turn clockwise to close.

STEP 4)

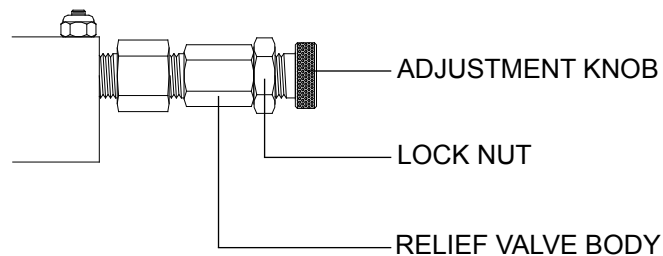
Place a minimum of 20 lbs. of ice in the Cool Box™. This will provide approximately 4-8 hours of operation.

STEP 5)

Attach respirator(s) and hose(s) to the respirator connections.

NOTE: Maximum inlet pressure for the unit should not exceed recommended operating pressure of the ambient air pump.

Relief Valve Adjustment

**STEP 1)**

With ambient air pump running, loosen lock nut.

STEP 2)

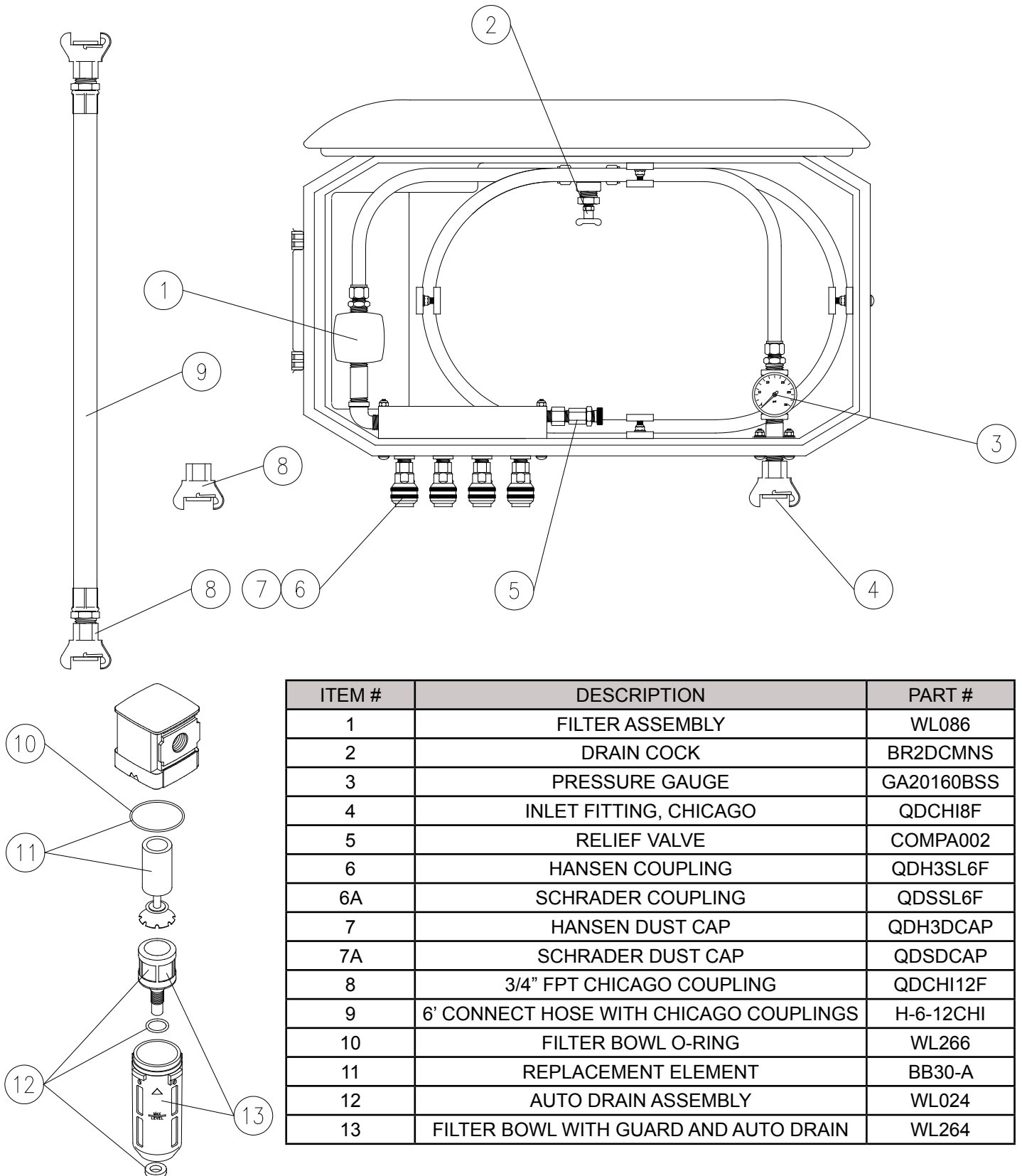
Turn adjustment knob clockwise to increase relief valve pressure setting or counterclockwise to decrease relief valve pressure setting.

NOTE: Do NOT back adjustment knob all the way out of relief valve body under pressure or parts may be lost.

STEP 3)

Once desired relief valve pressure is set, tighten lock nut.

Replacement Parts Model: BACB-196LP



ITEM #	DESCRIPTION	PART #
1	FILTER ASSEMBLY	WL086
2	DRAIN COCK	BR2DCMNS
3	PRESSURE GAUGE	GA20160BSS
4	INLET FITTING, CHICAGO	QDCHI8F
5	RELIEF VALVE	COMPA002
6	HANSEN COUPLING	QDH3SL6F
6A	SCHRADER COUPLING	QDSSL6F
7	HANSEN DUST CAP	QDH3DCAP
7A	SCHRADER DUST CAP	QDSDCAP
8	3/4" FPT CHICAGO COUPLING	QDCHI12F
9	6' CONNECT HOSE WITH CHICAGO COUPLINGS	H-6-12CHI
10	FILTER BOWL O-RING	WL266
11	REPLACEMENT ELEMENT	BB30-A
12	AUTO DRAIN ASSEMBLY	WL024
13	FILTER BOWL WITH GUARD AND AUTO DRAIN	WL264

Warranty

normal use for one year from the date of purchase. Any part which is determined by Air Systems to be defective in material or workmanship will be, as the exclusive remedy, repaired or replaced at Air Systems' option. This warranty does not apply to electrical systems or electronic components. Electrical parts are warranted, to the original user, for 90 days from the date of sale. During the warranty period, electrical components will be repaired or replaced at Air Systems' option.

NO OTHER WARRANTY, EXPRESSED OR IMPLIED, AS TO DESCRIPTION, QUALITY, MERCHANTABILITY, FITNESS FOR A PARTICULAR PURPOSE, OR ANY OTHER MATTER IS GIVEN BY AIR SYSTEMS IN CONNECTION HEREWITH. UNDER NO CIRCUMSTANCES SHALL THE SELLER BE LIABLE FOR LOSS OF PROFITS, ANY OTHER DIRECT OR INDIRECT COSTS, EXPENSES, LOSSES, OR DAMAGES ARISING OUT OF DEFECTS IN, OR FAILURE OF THE PRODUCT OR ANY PART THEREOF.

The purchaser shall be solely responsible for compliance with all applicable Federal, State and Local OSHA and/or MSHA requirements. Although Air Systems International believes that its products, if operated and maintained as shipped from the factory and in accordance with our "operations manual", conform to OSHA and/or MSHA requirements, there are no implied or expressed warranties of such compliance extending beyond the limited warranty described herein. Product designs and specifications are subject to change without notice. Rev. 2, 12/98

Air leaks are not covered under warranty except when they result from a defective system component, i.e. an on/off valve or regulator or upon initial delivery due to poor workmanship. Air leaks due to poor delivery or damage will be covered under delivery claims. Minor air leaks are part of routine service and maintenance and are the responsibility of the customer just as are filters and oil changes.

