

# VIBRAHONE™

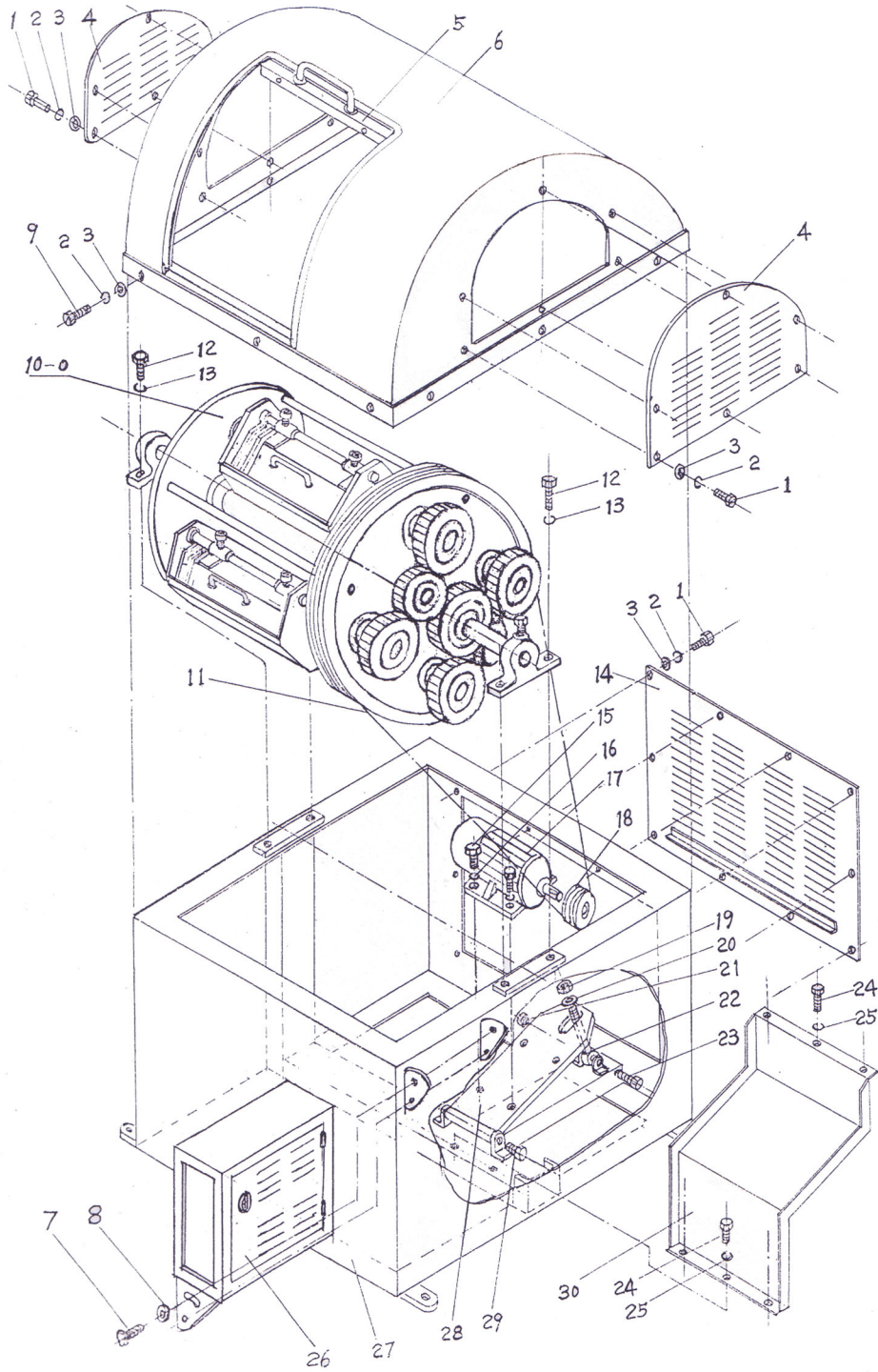
**CB-30**



**Vibra Finish Company**

WWW.VIBRAFINISH.COM

# CB-30 — EXPLODED VIEW DIAGRAM



**Vibra Finish Company**

WWW.VIBRAFINISH.COM

**CB-30 WITH NYLON GEAR  
PRIMARY PARTS LISTING  
(refer to diagram on page 2 of 5)**



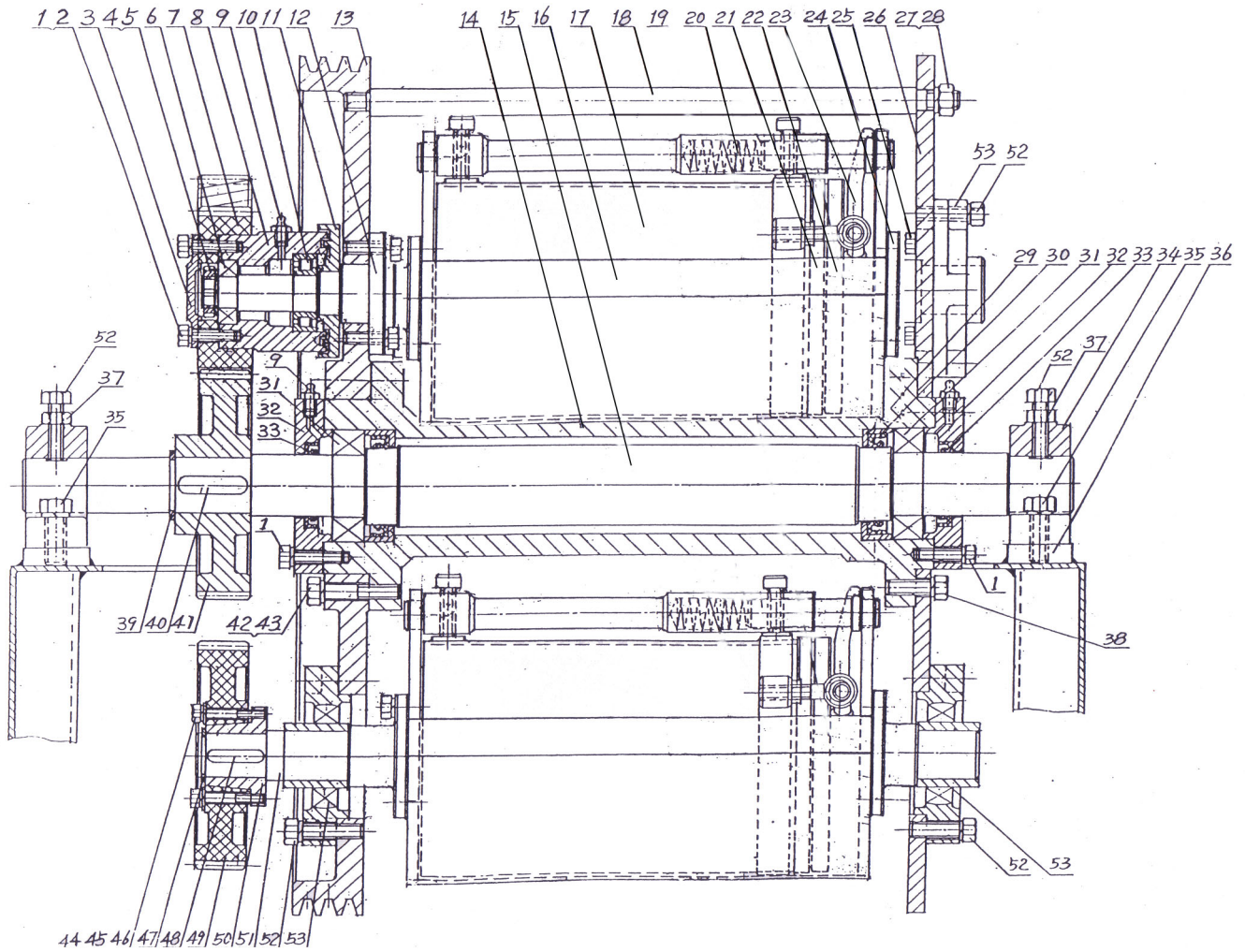
ITEM	DESCRIPTION	QTY
1	HEX HEAD SLOT SCREW M6X10	24
2	SPRING WASHER	36
3	FLAT WASHER (ø 6MM)	36
4	SIDE PLATE IN UPPER FRAME (1.5MM)	2
5	UPPER FRAME DOOR	1
6	UPPER FRAME	1
7	HEX HEAD BOLTS (M 8X10)	4
8	FLAT WASHER (ø8MM)	4
9	HEX HEAD SLOT SCREW (M6X15)	12
10-0	TURRET ASSEMBLY	1
11	V BELTS "A" TYPE L=2438	3
12	HEX SOCKET HD CAP SCREW (M16X40)	4
13	SPRING WASHER (ø 16MM)	4
14	BACK PROTECT PLATE (1.5MM)	1
15	MOTOR FIXED BOLTS (M10X40)	4
16	SPRING WASHER (ø 10MM)	4
17	BRAKE MOTOR YEJ90L-4 (1.5KW)	1
18	MOTOR PULLEY (ø 100MM)	1
19	HEX NUT (M16)	2
20	FLAT WASHER (ø 16MM)	2
21	HEX NUT (M12)	1
22	MOTOR ADJUST SCREW (M16X120)	1
23	HEX HEAD BOLTS (M12X40)	1
24	HEX HEAD BOLTS (M8X15)	6
25	SPRING WASHER (ø 8MM)	6
26	ELECTRIC BOX	1
27	BOTTOM FRAME	1
28	MOTOR BASE	1
29	HEX HEAD SCREW (M12X20)	2
30	WATER PROOF COVER	1



**Vibra Finish Company**

WWW.VIBRAFINISH.COM

# CB-30 TURRET ASSEMBLY DRAWING 10-0



**Vibra Finish Company**

[WWW.VIBRAFINISH.COM](http://WWW.VIBRAFINISH.COM)

# CB-30 TURRET ASSEMBLY — PARTS LISTING 10-0



ITEM	DESCRIPTION	QTY
10-1	HEX HEAD BOLTS (M1 0X40)	16
10-2	SPRING WASHER (ø 10MM)	56
10-3	COVER FOR TRANSFER GEAR	2
10-4	ROUND NUT (M 25X1.5)	2
10-5	LOCKING WASHER (ø 25MM)	2
10-6	DEEP GROOVE BALL BEARING (20 5)	2
10-7	TRANSFER GEAR (M=3 Z=43)	2
10-8	SLEEVE OF TRANSFER GEAR	2
10-9	OIL NOZZLE (M10X1)	4
10-10	SINGLE ROLLER BEARING (2206)	2
10-11	OIL SEAL PLATE	2
10-12	SHAFT OF TRANSFER GEAR	2
10-13	BELT ROLLER (ø 700MM)	1
10-14	MAIN SHAFT SLEEVE	1
10-15	MAIN SHAFT	1
10-16	BARREL HOLDER	4
10-17	BARREL	4
10-18	HOLDING BAR (ø 22MM)	4
10-19	NOT USED	0
10-20	LOCKING BAR	4
10-21	P/U LINING IN BARREL	4
10-22	BARREL COVER	4
10-23	CAM LOCKING BAR	4
10-24	BARREL SHAFT	4
10-25	HEX HEAD BOLTS (M1 0X25)	40
10-26	TURRET PLATE (ø 700MM)	1
10-27	NUT (M16)	4
10-28	SPRING WASHER (ø 16MM)	4
10-29	INSIDE BEARING COVER	2
10-30	OIL SEAL (60X80X12)	2
10-31	SELF-ALIGNING ROLLER BEARING (3510)	2
10-32	OUTSIDE BEARING COVER	2
10-33	OIL SEAL (50X70X12)	2
10-34	FIXED SHAFT HOUSE	2
10-35	HEX HEAD BOLTS (M16X40)	4
10-36	SETTING PLATE FOR SHAFT HOUSE	2
10-37	NUT (M 12)	2
10-38	HEX HEAD BOLTS (M1 6X40)	4
10-39	RETAINER RING FOR SHAFT (D=45)	1
10-40	FLAT KEY (A1 4X50)	1

ITEM	DESCRIPTION	QTY
10-41	HEX HEAD BOLTS (M1 0X40)	1
10-42	SPRING WASHER (ø 10MM)	4
10-43	COVER FOR TRANSFER GEAR	40
10-44	ROUND NUT (M 25X1.5)	16
10-45	LOCKING WASHER (ø 25MM)	16
10-46	DEEP GROOVE BALL BEARING (20 5)	16
10-47	TRANSFER GEAR (M=3 Z=43)	4
10-48	SLEEVE OF TRANSFER GEAR	4
10-49	OIL NOZZLE (M10X1)	4
10-50	SINGLE ROLLER BEARING (2206)	4
10-51	OIL SEAL PLATE	4
10-52	SHAFT OF TRANSFER GEAR	34
10-53	BELT ROLLER (ø 700MM)	8

