



**CLEMCO**  
The Performance  
System

## TECHNICAL DATA SHEET

*Note: For safe, efficient blasting, read and follow the owner's manual and seek training for everyone who will use this equipment.*

### Purpose

The Apollo 60 LP is designed for use with an ambient air pump. It meets OSHA standards for respiratory protection and noise limitations. The Apollo 60's full-helmet design protects the blast operator's head from rebounding abrasive and from construction-site impact hazards.

The heavy-duty cape protects the operator's neck, shoulders, and chest from rebounding abrasive.

### Requirements for Operation

The following items are required or recommended for operation, but are not included with this respirator:

- An ambient air pump that is NIOSH approved for use with respirators, capable of delivering 7 to 15 cfm of air at 8 to 12 psi
- 1/2-inch x 50 or 100 feet respirator hose from the ambient air pump to the helmet connection
- Protective clothing, gloves, and shoes suitable for a heavy construction site
- Primary hearing and eye protection
- Output from the ambient air pump must meet the standard for Grade D breathing air, as defined by the Compressed Gas Association, Commodity Specification: G-7.1 ([www.cganet.com](http://www.cganet.com))

### Description of Operation

The Apollo 60 includes a double-shell construction helmet supported by an adjust-able suspension. The operator adjusts the suspension to fit, then installs it in the helmet. A chin strap holds the helmet firmly in place.

The wide, full-view window provides an expansive field of view. An inner fixed lens seals out dust and abrasive. Up to five lightweight, disposable outer lenses, held in place by a hinged frame, protect the inner lens from pitting. As the outermost

## Description

The Apollo 60 LP is a Type CE, continuous flow, supplied-air respirator with Constant-Flow Connector for abrasive blasting, for use with an ambient air pump. The high visibility red Apollo 60 LP is a double-shell helmet, with a full-view window, and a protective cape.



disposable lens becomes pitted, it can be torn off to expose the next lens.

The Apollo 60 LP comes with a Constant-Flow Connector that provides a fixed flow of air.

A flexible breathing tube between the Constant-Flow Connector and the helmet allows free movement of the operator's head. This tube contains specially-formulated sound-deadening materials that help the respirator comply with 80 dBA maximum noise level while allowing free air flow. For maximum protection while blasting, the operator must wear ear plugs or other suitable hearing protection and safety glasses or goggles.

The air enters the helmet at the rear, travels through a sound-attenuating distribution system at the top, and circulates about the operator's face. The incoming air maintains slightly positive pressure inside the helmet, so exhaled air exits via the knit collar. Maintaining positive pressure inside the helmet helps keep out the potentially harmful dust and abrasive.

## Apollo 60 LP Supplied-Air Respirator

Stock No. 22081, 22082

### Advantages

- Requires no compressor, breathing air filter, or CO monitor
- Wide, full-view window
- Lightweight construction
- Nylon carrying strap
- Allows operator to wear supplementary hearing and primary eye protection

### Approvals and Certifications

The Apollo 60 LP helmet is a NIOSH-approved type CE respirator (approval number TC# 19C - 358) and is recognized by OSHA as having an assigned protection factor (APF) against lead dust of 1000 times the permissible exposure limit (PEL). It also meets the American National Standards Institute (ANSI) requirement for hard hat protection.

**NOTE: Prior to use, ensure that the Apollo, type CE, supplied-air respirator is appropriate for your specific blasting conditions and requirements.**

## Related Clemco Literature

Description	Stock No.
Contractor Series Catalog .....	21385
Abrasive Blasting Safety Practices .....	22090
Blast Off 2 .....	09294
Safety Equipment Product Study .....	07764
Apollo 60 LP Owner's Manual .....	22084

## Options and Accessories

Description	Stock No.
Heavy cotton/leather blast suit..... S (08920), M (08921), L (08922), XL (08923)	
Seasonal cotton/nylon blast suit.... M (22914), L (22915), XL (22916), XXL (22917)	
Leather gloves .....	02243
High pressure conversion kit. Converts LP helmet to HP helmet .....	22080

## Respirator Systems and Accessories

Description	Stock No.
Apollo 60 LP, without respirator hose.....	22081
Apollo 60 LP, with 1/2" x 50ft respirator hose .....	22082

## Packaging

All helmet boxes are 13 1/2" x 13" x 11"

### Respirator

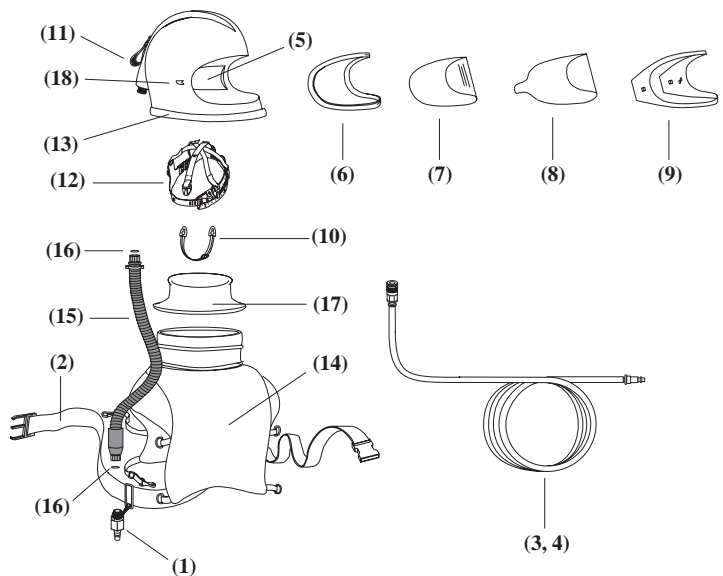
Stock No.	Dimensions	Weight
22081	13 1/2" x 13" x 11"	7.5 lb
22082	(same)	15.5 lb

### Respirator Hose (in separate poly bag)

Stock No.	Dimensions	Weight
22510	Approximate 17 1/2" x 17 1/2" x 4"	11 lb
21413	Approximate 17 1/2" x 17 1/2" x 6"	22 lb

## Replacement Parts

Item	Description	Stock No.
1.	Constant-Flow Connector, LP, without belt .....	21429
2.	Belt assembly, 2" .....	04430
3.	Respirator hose, 1/2" x 100' .....	21413
4.	Respirator hose, 1/2" x 50' .....	22510
5.	Acoustical foam kit, sides .....	04369
6.	Gasket, window .....	04452
7.	Inner lens, .040" (5) .....	04367
8.	Outer lens, .0075", perforated (25) .....	04361
9.	Window frame kit .....	08741
10.	Chin strap .....	04460
11.	Handle strap .....	03623
12.	Suspension .....	10532
13.	Cape attachment strap .....	10534
14.	Cape, with inner collar .....	04435
15.	Breathing tube assembly w/swivel ends .....	22811
16.	O-ring, 11/16" ID x 7/8" OD, 2 required .....	22815
17.	Inner collar kit .....	08740
18.	Window latch kit .....	04368



Authorized Distributor:

ISO 9001-2000 certified. Clemco is committed to continuous product improvement. Specifications are subject to change without notice.

© 2004 Clemco Industries Corp. • One Cable Car Drive • Washington, MO 63090 • Phone (636) 239-4300 • Fax (636) 239-0788

Stock No. 21997

www.clemcoindustries.com

Job No. 1195-1295 • Date of Issue: 06/98, Rev. C; 08/04